

**Universal Steckschlüssel für
Präzisions-Spannmuttern ZM/ZMV**

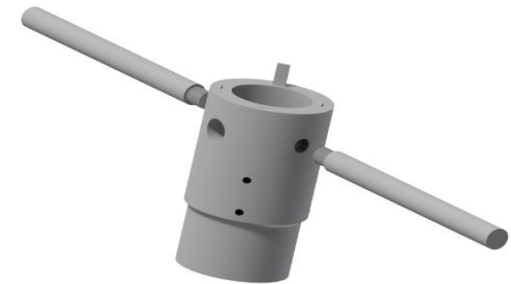


Schlüssel im Schnitt
Key cut

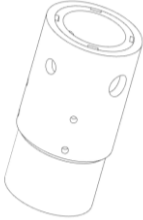
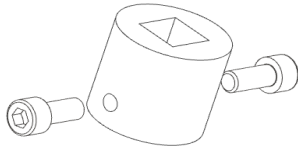
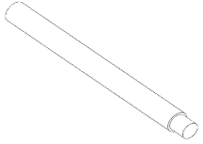
1. Schlüssel mit Querbolzen
1. Key with cross hole



2. Schlüssel mit 4-kt. Einsatz
2. Key with square head



3. Schlüssel mit Handgriffen
3. key with handholders

Steckschlüssel Socket wrench				4-kt. Einsatz Square head		Handgriffe Handholders
						
Art.-Nr.	Ø D	L	Spannmutter/ Precision locknut	Art.-Nr.	SW	Art.-Nr.
ZMS 12	22	80	M 12 x 1 (ZM)	ZME 12	6.35	ZMH Ø 7 x 80
ZMS 15	25	80	M 15 x 1 (ZM)	ZME 15	9.50	ZMH Ø 9 x 90
ZMS 17	28	80	M 17 x 1 (ZM + ZMV)	ZME 17	9.50	ZMH Ø 9 x 90
ZMS 20	32	80	M 20 x 1 (ZM + ZMV)	ZME 20	12.70	ZMH Ø 10 x 100
ZMS 25	38	80	M 25 x 1.5 (ZM + ZMV)	ZME 25	12.70	ZMH Ø 10 x 100
ZMS 30	45	80	M 30 x 1.5 (ZM + ZMV)	ZME 30	12.70	ZMH Ø 10 x 100
ZMS 35	52	80	M 35 x 1.5 (ZM + ZMV)	ZME 35	19.05	ZMH Ø 13 x 110
ZMS 40	58	80	M 40 x 1.5 (ZM + ZMV)	ZME 40	19.05	ZMH Ø 13 x 110
ZMS 45	65	100	M 45 x 1.5 (ZM + ZMV)	ZME 45	19.05	ZMH Ø 13 x 110
ZMS 50	70	100	M 50 x 1.5 (ZM + ZMV)	ZME 50	25.40	ZMH Ø 16 x 120
ZMS 55	75	100	M 55 x 2 (ZM + ZMV)	ZME 55	25.40	ZMH Ø 16 x 120
ZMS 60	80	100	M 60 x 2 (ZM + ZMV)	ZME 60	25.40	ZMH Ø 16 x 120
ZMS 65	85	100	M 65 x 2 (ZM + ZMV)	ZME 65	25.40	ZMH Ø 16 x 120